



Dr. Goel's



New concept of Animal Feed Supplementation

HAMBAL[®]

Herbal and Mineral Balanced Animal Life



GOEL VET PHARMA PVT. LTD.

SINCE 1977

A vary new approach to your veterinary clinical problems

GOEL VET. PHARMA PVT. LTD.



Scan QR

Pioneer Of Homeopathy In Veterinary Since 1977
GOEL VET. PHARMA PVT. LTD.

Regd. Office: 42/C, Pratap Nagar, Chittorgarh-312001, Rajasthan, India
Marketing Office: B-165, 166, Major Dhyan Chand Nagar, Delhi Road, Meerut (U.P.)
E-mail : info@goelvetpharma.com / Customer Care +91- 81 91 006 007

Dr. Goel's PROFILE

" In INDIA an **VETERINARY DOCTOR** not only serves deaf & dumb animal but also put contribution in economic & social wealth to build strong nation."

An Eminent Veterinarian keen observer, scientific visionary and compassionate person started his journey after doing his BVSc & AH from Jawaharlal Nehru Krishi University, Jabalpur in 1967 and served in Govt. Dept, for 33 long years retired as deputy director.

A sharp observer a quick analyzer and prescriber, he had a penchant for applying allied sciences ie Homoeopathy, which he studied for two years at Royal Homoeopathic college Lucknow for BVSc & AH and come to various successful formulations for varied typical diseases like Mastitis, FMD, HS, Meningitis. His 33+ years experience had laid down a successful venture, become pioneer in field of veterinary that is Goel Vet. Pharma Pvt. Ltd. to serve deaf, dumb and most vulnerable creature on Earth.

We always try to give the best food to our pets to live long, happy, healthy lives. We always try our best for our pets but sometimes they remain weak and unhealthy. That's why all the time they feel unhappy and uncomfortable. We also feel worried about the health of our pets. But we forgot about pet supplements. Supplements are very important for our pets. All dog foods have already mixed supplements in there but sometimes it's not enough for our pets in puppy age. All supplements must be given for at least 12 months. Many types of supplements are available in the market but all products are no necessary only some main supplements are essential.

So here I suggest you important supplement for your pets.



LATE DR. R.K. GOEL
BVSc & AH, Founder of
GOEL VET. PHARMA PVT. LTD.



Introducing... **HAMBAL**[®]

Herbal and Mineral Balanced Animal Life

The concept of HAMBAL is the 21st century e-age concept of Animal Feed Supplementation introduced in a multi range products with the goodness of Herbs, Minerals, Trace Elements, Micro-Nutrients and Homoeopathic Formulations. As all we know that animal health is now a days more important because of commercial purpose of owner. To maintain animal health it is must for a owner to give animal a proper diet and dietary supplements in a unique ratio of Herbs, Minerals, Trace Elements, Micro-Nutrients and Homopathic concept of making formulation better than ever.

What is "Herbs"?

Herbs have a variety of uses including culinary, medicinal, and in some cases spiritual usage. General usage of the term "herb" differs between culinary herbs and medicinal herbs. In medicinal or spiritual use any of the parts of the

plant might be considered "herbs", including leaves, roots, flowers, seeds, resin, root bark, inner bark, etc.

What is "Trace Elements or Micro-Nutrients"?

Micronutrients are nutrients required by humans or animals and other organisms throughout life in small quantities The microminerals or trace elements include at least iron, cobalt, chromium, copper, iodine, manganese, selenium, zinc and molybdenum. Micronutrients also include vitamins, which are organic compounds required as nutrients in tiny amounts by an organism.

What is "Minerals"?

Minerals in order of abundance in the human body include the seven major minerals calcium, phosphorus, potassium, sulfur, sodium, chlorine, and magnesium. Important "trace" or minor minerals,



necessary for mammalian life, include iron, cobalt, copper, zinc, molybdenum, iodine, and selenium

Balanced Animal Life

Balance of above all three ingredients are backed with scientific parameters, procedures and effective documentation through research at various levels. Our formulations are well proven in the field also and their claims are verified by veterinarians. Balance

animal life is not only quot it server quality at minimal cost for the farmer so that the farmer and the animal both can enjoy life in all respect.

Now we are Introducing a range of products with ready to use formulations of Animal Feed Supplements for better generation. the upcoming products are pure, safe, and effective for the purpose of animal Health. Herbal and Mineral Balanced Animal Life

Regards
Dr. Goel

CONTENT

S.NO.	PRODUCTS
1.	HAMBAL-LIV
2.	HAMBAL-CAL
3.	HAMBAL-VET
4.	HAMBAL-H
5.	HAMBAL-MIN
6.	ABC +





ACTIONS

Improves Appetite, Tones up Digestive Function.

Achieve and maintain early peak production.

Rejuvenates Damaged Liver cells, valuable Metabolic Tonic.

Improve Growth & Production of Alimentary Track, Tonic Lignification.

Supportive Therapy in Liver Dysfunction as seen in homeopathy disturbance in Post Hepatic convulsions.

INGREDIENTS

Alfalfa (Medicago Sativa), China (Cinchona Officinalis), Clubmoss (Lycopodium Clavatum), Silybum Marianum (Cardus Marinus), Celandine (Chelidonium Majus), Linociera (Chionathus Virginica), Calcium Phosphate (Ca) Magnesium Phosphate (Mg) Sodium Phosphate (Na) Potassium Phosphate (K) Excipients Q.S. Permitted Class II preservatives.

RECOMMENDED QUANTITY

Cattle

Cow/ Buffalo : 5 ml. 3 to 4 times a day

Cat & Dogs : 2 ml. 3 to 4 times a day

Poultry (for 100 Birds)

10 ml 100 Birds 2 times a day in drinking water or as suggested by Veterinarian.

PRESENTATION :

200 ml, 900 ml & 5 kg.

VETERINARY FEED SUPPLEMENT
HAMBAL-LIV
LIVER TONIC

VETERINARY FEED SUPPLEMENT
HAMBAL-CAL
 CALCIUM SUSPENSION

Feed Supplement Containing Calcium, Phosphorus, Vit. D3, B12 Cobalt & with Liver Corrective & Lactation Formula



NUTRITIONAL VALUE (APROX)

Calcium	1625 mg
Phosphorus	835 mg
Vitamin D3	8000 I. U
Vitamin B12	100 mcg
Vitamin A	5000 I.U
Leptadenia Reticulata	200 mg
Asparagus Racemosus	1000 mg
Piper Longum	400 mg

RECOMMENDED QUANTITY

Cattle

Large Animals	: 100 ml. Daily
Small animals	: 40 ml. Daily
Cat & Dogs	: 20 ml. Daily

Poultry (for 100 Birds)

Chicks & Broilers	: 20 ml. daily
Growers	: 50 ml. daily
Layers	: 100 ml. daily

ACTIONS

- Better growths and tonocity of muscle
- Higher Milk Yield
- Easy to carry and Administer
- Unique way of formulation so not to sediment
- Ensure Money Return by Higher Production
- Palatable in Taste
- Economic Packs

PRESENTATION

1 Liter or 10 Liter

VETERINARY FEED SUPPLEMENT

HAMBAL VET

ENERGY BOOSTER

INGREDIENTS :

Alfalfa (Medicago sativa), Fivephos, Calcium, Carbohydrates & Soya lecithin.

NUTRITIONAL VALUE (APROX)

Carbohydrates	60%	w/w
Fat	01%	w/w
Protien	0.5%	w/w
Calcium	20%	w/w
Magnesium	01%	w/w
Sodium	0.5%	w/w
Total Calories	500 K.CI.	

ACTIONS :

Health Promoter, Tonic, Improves Health and vigour Replenishes the daily loss of calcium thus maintains, optimum milk & egg production.

DOSAGE :

Cow / Buffalo : 20 gms. twice daily

PRESENTATION :

5 kg.



*Animal feed supplement not for medicinal use.
Store in cool, dry place protect from sunlight*

VETERINARY FEED SUPPLEMENT
HAMBAL-H
LIQUID FEED CONCENTRATE FOR
LIVESTOCK AND POULTRY



INGREDIENTS

Nutritional Value (Each 10 ml) :
Vitamin H (Biotin) : 125 mcg
Ele. Selenium : 60 mcg
Vitamin E : 50 mg
Vitamin A : 120,000 I.U.
Vitamin D3 : 60,000 I.U.

PRESENTATION

500 ML, 1 & 5 Ltr.

BENEFITS CATTLE

- Helps in optimize milk production in cattle
- Improves reproductive performance in cattle
- Improves immunity
- Prevent mastitis
- Helps in udder development

DOSAGE

- Cow/Buffalo 10ml. per day
- Sheep/Goat 5ml. per day
or as suggested by Doctor



VETERINARY FEED SUPPLEMENT

HAMBAL-MIN

ESSENTIAL BIOAVAILABLE TRACE FOR
THE MOST PRIZED ANIMALS IN YOUR CARE



INGREDIENTS

Each 1 kg

Macro Minerals :

Calcium	280 gm.
Phosphorus	140 gm.
Magnesium	10 gm.

Micro Minerals :

Zinc MHA	22 gm.
Iron MHA	3.5 gm.
Copper MHA	9 gm.
Manganese MHA	3.5 gm.
Cobalt	125 mg.
Lodine	325 mg.
Selenium	10 mg.
Nicotinamide	1000 mg.
Chromium	60 mg.
Sulphur	5 mg.
Sodium	100 mg.
Potassium	

Fat Soluble Coated Vitamin

Vitamin A	I.U.
Vitamin D3	120000
Vitamin E	I.U.
Vitamin K	500 I.U.

Liver :

Silymarin	200 mg.
in a flavoured base	200 mg.

PRESENTATION

1 kg. & 5 kg.

DOSAGE

- 25g to 30g per cow/ buffalo per day to mixed in the feed
- 10g to 15g per calf per day to be mixed in the feed for better weight gains
- Poultry 1 kg HAMBAL-MIN to be mixed in 100 kg. of feed.



ANIMAL FEED SUPPLEMENT

ABC⁺

ALFA BIO CALCIUM

Alfalfa With Bio Available Calcium + Vitamin

INGREDIENTS

ABC No. 1 (Red)

NUTRITIONAL FACTS

Nutrients	Unit	Delivery Per Serve (20 g)	Nutrients Functions
Iron	mg	40	Important for healthy blood to support optimal oxygen carrying capacity essential for stamina
Vitamin C	mg	37.5	
Vitamin B2	mg	0.56	Which help in optimal utilization of oxygen by the body important for stamina
Vitamin B6	mg	0.63	
Vitamin B12	mcg	125	
Folic Acid	mg	0.250	
Vitamin B1	mg	0.56	Which help in energy release from food essential for efficient working of body cells.
Niacin	mg	20	
Biotin	mcg	0.05	
Lactobacillus Sporogenes	million	300	
Iodine	mg	6.5	
Magnesium	mg	0.13	
Vitamin A	mg	40	Which help protect from excessive cell damage due to oxidative stress.
Copper	mg	40	
Zinc	mg	200	
Vitamin D	mg	0.05	Which help in maintenance of optimal bone & muscle health for strength.
Copper	w/w	40%	
Zinc	w/w	20%	
Sodium	mcg	10.4	The trace elements in appropriate quantity for enzyme action.
Potassium	mg	2	
Selenium	mg	0.2	
Chromium	mcg	60	

PRESENTATION :

6 Master Pouches

ABC No. 2 (Blue)

NUTRITIONAL FACTS

Nutrients	Unit	Delivery Per Serve (20 g)	Nutrients Functions
Alfa Alfa (Medicago Sativa)	w/w	5%	Alfalfa is high in protein, Calcium, Plus other minerals, Vitamin in the B group, Vitamin C, Vitamin D, Vitamin E and Vitamin K.
Asparagus Racemosus	w/w	5%	To increase the non-specific resistance of organisms against a variety of stresses. It is generally used as a galactagogue.
Five Phos	w/w	10%	For tissue building and nutrition to nerves, brain & bones.
Silica	w/w	2.5%	Used for proper digestion and assimilation of nutrients from food.
Calcium Carbonate	w/w	2.5%	Used for proper digestion and assimilation of nutrients from food.

DOSAGE :

20 g to be given in evening before milking. or as Suggested by the Veterinarian.

DOSAGE :

20 g to be given in morning before milking.



VETERINARY FEED SUPPLEMENT

CATABOOST

CATALYTIC BOOSTER



ACTIONS

Acts as Immunity Booster
Useful in Lumpy Skin Disease in Cows
Helps to improve Milk Production
Helps to improve Milk Quality
Helps to increase Milk Fat Percentage
Helps to increase SNF in milk
Helps to Improves blood glucose level
Helps in the overall Growth.

INGREDIENTS

Vitamins, Minerals, Herbs

PRESENTATION :

1000 ml

RECOMMENDED QUANTITY

Cattle

Cow/Buffalo 20ml. to 50ml 3 times a day

Calf 10ml. to 20ml 3 times a day



HAMBAL **Ca⁺² GEL** कै 2 जेल

**BIO-AVAILABLE IONIC
CALCIUM GEL ELEMENTAL
CALCIUM MAGNESIUM,
SELENIUM & NATURAL
ENERGY SOURCE**

Direction For Use :

- Hold the head of the animal in a slightly elevated position.
- Place the nozzle of the bottle by side of mouth (Buccal cavity).
- Allow the product to flow gradually.

Benefits :

- Supplements ionic calcium in calcium deficient dairy animals.
- Supports in maintaining the normal calcium, selenium levels.
- Added energy helps in speedy recovery.

Recommended Usage :

- Administer one bottle before parturition and second after parturition.
- Animals exhibiting signs of low calcium can be given one bottle of **HAMBAL Ca⁺² GEL** followed by second bottle 10-12 hours after 1st bottle.
- Administer one bottle as first dose after treatment followed by second bottle 10-12 hours of 1st dose.

Note :

- Administer only to dairy animals which can stand and swallow normally.
- Does not replace intravenous calcium treatment for milk fever.
- Do not administer concomitantly (along with) with intravenous calcium treatment.
- Avoid accidental administration into windpipe & lungs.



Direction For Use :

- Hold the head of the animal in a slightly elevated position.
- Place the nozzle of the bottle by side of mouth (Buccal cavity).
- Allow the product to flow gradually.

Benefits :

- Supplements ionic calcium in calcium deficient dairy animals.
- Supports in maintaining the normal calcium, selenium levels.
- Added energy helps in speedy recovery.

Recommended Usage :

- Administer one bottle before parturition and second after parturition.
- Animals exhibiting signs of low calcium can be given one bottle of **HAMBAL Ca⁺² GEL** followed by second bottle 10-12 hours after 1st bottle.
- Administer one bottle as first dose after treatment followed by second bottle 10-12 hours of 1st dose.

Note :

- Administer only to dairy animals which can stand and swallow normally.
- Does not replace intravenous calcium treatment for milk fever.
- Do not administer concomitantly (along with) with intravenous calcium treatment.
- Avoid accidental administration into windpipe & lungs.

HAMBAL Ca⁺² GEL GOLD

कै 2 जेल गोल्ड

**BIO-AVAILABLE IONIC CALCIUM GEL
ELEMENTAL CALCIUM MAGNESIUM,
SELENIUM & NATURAL ENERGY SOURCE**



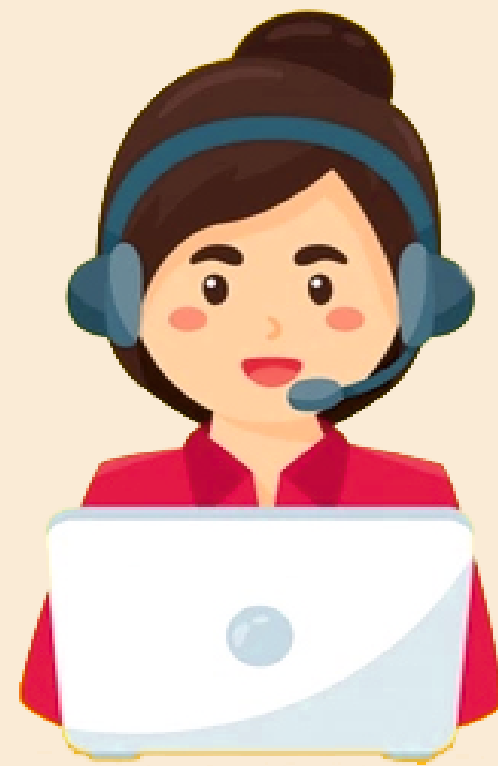
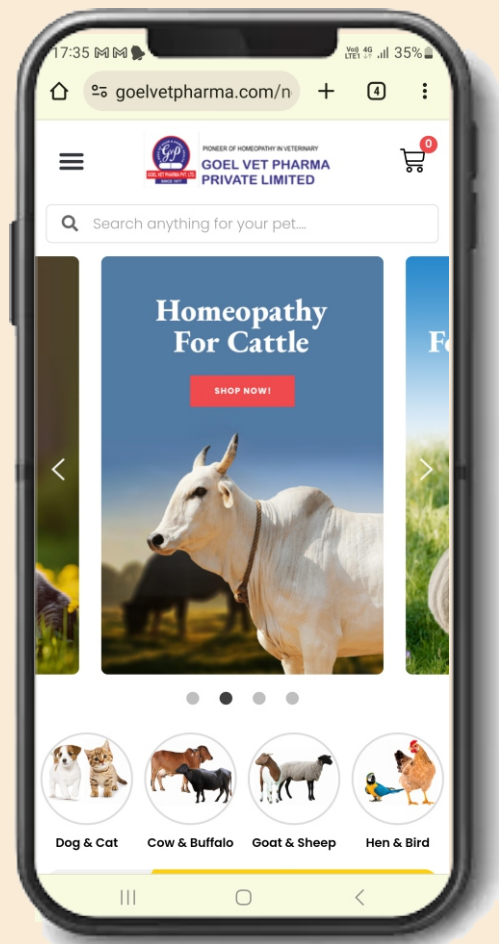
Disclaimer

This Catalogue has been created for visual purpose of the medicines and It is to be used from a Registered Medical Practitioners or a Hospital or Laboratory.



Thank You


Visit us




Customer Care :
+91-8191006007



Follow us

 /goelvet dr. goel' Homeopathy for Pet

 /goelvet @goelvetpharma

 /goelvetpharma@goelltd

